



3D Printed Plaques

Classic style meets innovation, with low-relief 3D printed plaque technology. For Interior exposure, this new groundbreaking technology offers a superior method of production over traditional metal plaque production methods such as casting and etching.

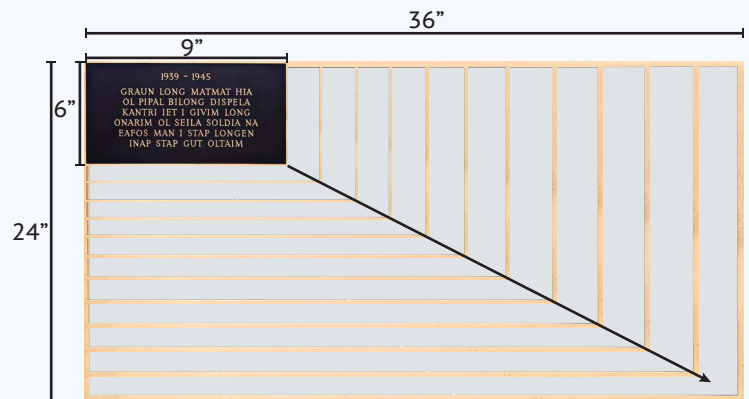
Benefits include:

- :: Greater cost value up to 50% the cost of traditional methods
- :: Decreased lead times from weeks and months to just days
- :: Cleaner and more environmental friendly than metal processing methods
- :: Lighter weight reduces install time and eliminates heavy mounting requirements
- :: Versatility on metal color and background textures, including full customizable artwork

Minimum Font Size	Recommended Font Size
:: 14 pts	:: 25 pts

Life Expectancy

Recommended for indoor use



Sizes

Our laminated PVC with brushed aluminum and 3mm brushed aluminum ACP plaques range from 6" x 9" to 24" x 36" in size*.

*Contact us for more details on smaller/custom size requirements

Prices and the factors affecting it

The prices of our 3D Printed Plaques range from **\$250 - \$850+**.

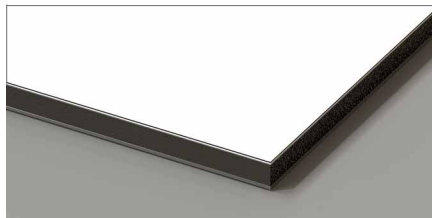
These prices are based on the following factors:

- Size of the plaque
- Background material
- Mounting type
- Quantity of plaques
- Complexity of the artwork

Contact us for a quote

**Laminated PVC**

This ½" thick substrate is our most popular option, providing a strong visual depth and versatile mounting options. Ideal for stand-alone plaques, this material can be mounted with either VHB tape and silicone for small scale, or blind studs for large scale, depending on your mounting surface and application.

**Aluminum Composite Panel**

A 3mm thick panel provides a streamlined background option that is lightweight and low-profile. Ideal for applications where low-depth is desirable and mounted on smooth surfaces via VHB tape mount.

*Stud mounting not available.

**Aluminum Sheet**

A .040 thin aluminum plate for small scale applications with multiple name plates. Also ideal for composite designs and can be laminated to other materials such as wood and acrylic.

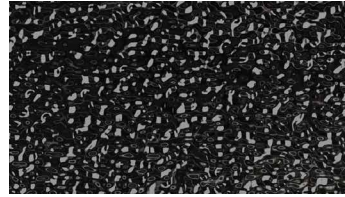
Background Textures



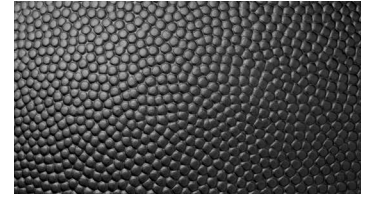
Leather



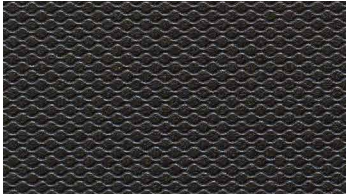
Leatherette



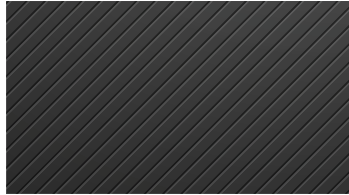
Stipple



Sports Leather



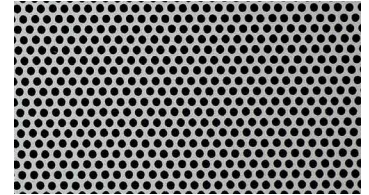
Mesh



Diagonal Stripe

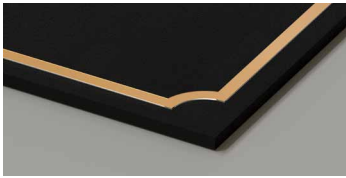


Contemporary Waves



Dots

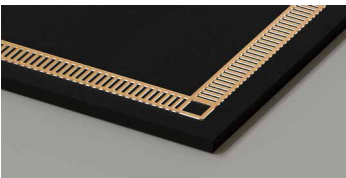
Borders



Chamfer



Floral



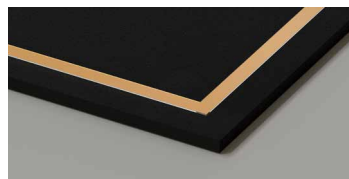
Ladder



Lattice



Greek

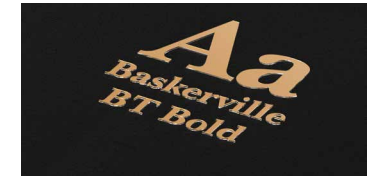


Inset

Fonts



Avant Garde



Baskerville BT Bold



Gotham Book



Helvetica Regular



Clarendon BT Roman



Copperplate Gothic Bold

Metal Text Color



SILVER



GOLD



GUNMETAL



BRONZE



NICKEL



BRASS



COPPER



ROSE GOLD